

GEORGE AND FRANCES BALL FOUNDATION



Est. 1937

2021
ANNUAL REPORT





TABLE OF CONTENTS

RECAP OF THE YEAR

President & CEO Statement	2
Grantmaking Overview	3

WHAT GUIDES OUR WORK

GFBF Impact Model of Philanthropy	4
-----------------------------------	---

THE ROLES OF THE FOUNDATION

The Foundation As A...	
Convener & Leader	6
Funder	10
Capacity Builder	16
Advocate	18
Resource Sharer	20

THE PEOPLE BEHIND THE FOUNDATION

GFBF Board & Staff	22
Foundation History	23



PRESIDENT & CEO STATEMENT



This year has been one marked by increased collaboration with a wide variety of community organizations focused on a special goal of improving the future and potential for thousands of young citizens of Muncie. We want to express special thanks to all the individuals and organizations that have joined together in this effort to improve educational attainment for this and future generations. As they say, “no individual or organization can do it alone.” It takes the whole community working together to determine a better, brighter path ahead.

The George and Frances Ball Foundation played a variety of roles in this re-envisioning, including the role of convener, advocate, capacity builder, sharer of resources, and funder, proudly investing more than \$5.4 million in area nonprofit efforts. The George and Frances Ball Foundation, following its stated Mission of proactively improving the livability and educational attainment of citizens in the community, has adopted a goal of extending equitable assistance and support to families and youth in the historically underserved neighborhoods of Muncie (referred to as Promise Neighborhoods), starting at birth and extending through to successful employment that provides a living wage and a greater opportunity to thrive for current and future generations.

To implement this strategy, the Foundation has adopted a proactive strategy and serves as the backbone convener for Cradle to Career Muncie, supporting too its associated strategies necessary for success in this multi-generational approach. Cradle to Career Muncie utilizes both collective impact and results-based accountability frameworks to ensure effective, targeted, and collaborative efforts. By strengthening and expanding opportunities that ensure that all children and families have equitable access to a pipeline of solutions from cradle to career, the Foundation believes that this initiative has the potential, in partnership with others, to provide a brighter future for all of Muncie.

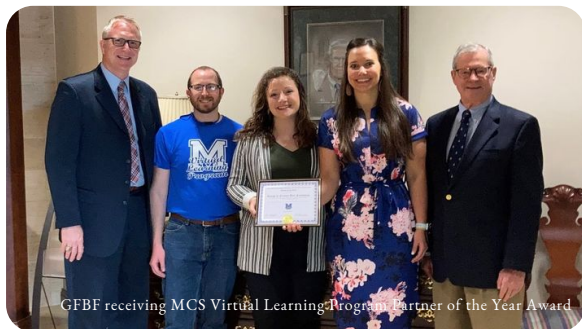
We sincerely hope that this report offers bold insight to the work of not only the Foundation in its many roles, but to the work of so many key stakeholders across Muncie who are working together to build a brighter future in which our young people and their families will thrive.



Thomas J. Kinghorn

THOMAS J. KINGHORN

President and CEO

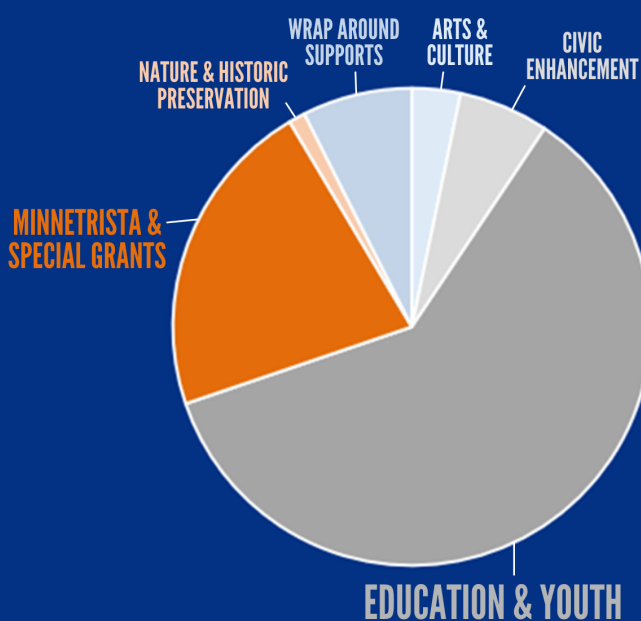


GRANTMAKING OVERVIEW

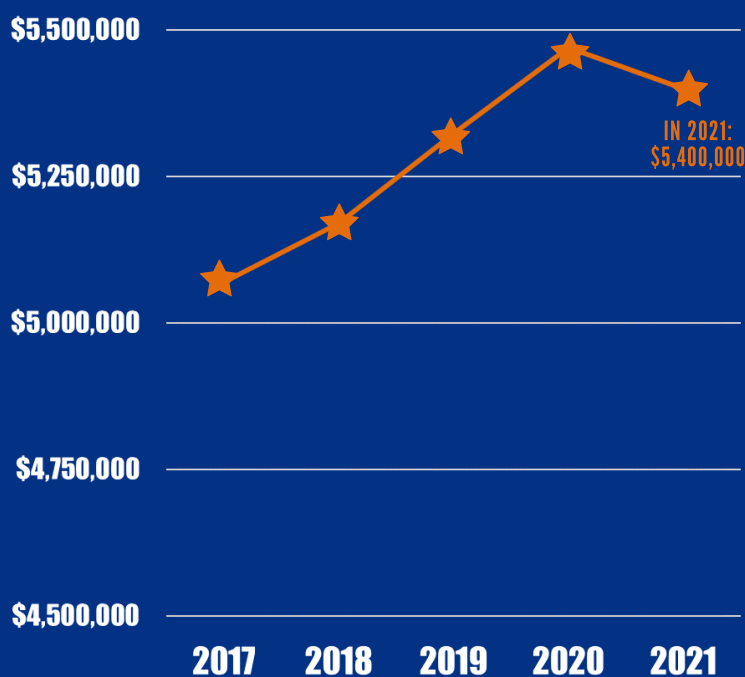
For the past 84 years, the George and Frances Ball Foundation has allocated grants for charitable purposes primarily in the Muncie and Delaware County community. The Foundation is continually responsible for understanding the donors' intent, as well as evaluating the current needs of the community. Where these two ideas intersect is where the Foundation's grantmaking, as well as other leadership roles, come into play. Grantmaking at GFBF is focused on improving quality of life and place, in addition to a proactive focus of increasing educational attainment in an effort to drive greater prosperity for children and families. During the past three years alone, the George and Frances Ball Foundation has authorized grants totaling more than \$4.5 million to directly support cradle to career activities across the community.

In 2021, the Foundation granted \$5.4 million in awards to more than 40 different organizations. Grants were awarded for purposes ranging from capital campaigns for new buildings to everyday operating support to strategic partnerships and collaborations. The pie chart below depicts what percentage of 2021's allocations were granted to each focus area. Next to it, the chart illustrates the growth in total annual funding that the Foundation has awarded over the past 5 years.

2021 GRANTS BY FOCUS AREA



FOUNDATION ANNUAL GRANT HISTORY



IMPACT MODEL OF PHILANTHROPY

When adopting the proactive grantmaking strategy focused on improving livability and educational attainment through a Cradle to Career approach, the Foundation acknowledged that pursuing this strategy only from the lens of grantmaking would be to limit its potential for impact.

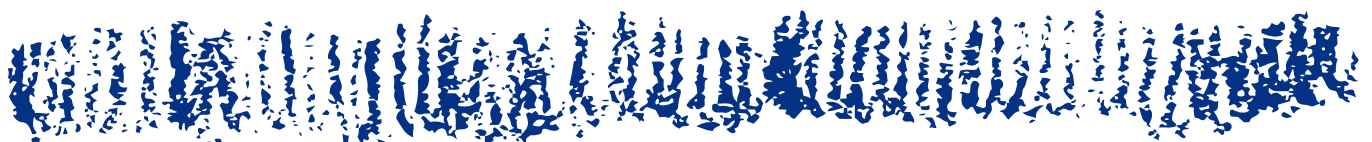
The George and Frances Ball Foundation Impact Model of Philanthropy serves as both a visualization of and a guide for the various influences that drive and inform the Foundation's work, the many roles that the Foundation plays in the community and alongside peers, and the ultimate mission-focused, positive change that should flow from informed, focused, holistic work.

The George and Frances Ball Foundation takes seriously the Foundation's unique ability to pull together people and organizations from across different sectors, industries, and neighborhoods. Where nonprofit organizations tend to operate as experts and at the grassroots level, foundations tend to be generalists, operating at 10,000-feet-above in a community's ecosystem. This broader level of perspective equips foundations such as GFBF to serve as a connector and convener. Many times, the collaboration that results from facilitating introductions and interactions between partners is just as powerful as a grant.

When you add together the value of the relationship and a grant award, the result is often times much more significant and influences lasting community impact.

FOUNDATIONS ARE AS MUCH ABOUT
IDEAS & KNOWLEDGE
AS THEY ARE ABOUT
GRANT DOLLARS.

-INDIANA PHILANTHROPY ALLIANCE



GEORGE AND FRANCES BALL FOUNDATION MISSION & STRATEGIC PLAN

Key influences that inform our work...

**PROFESSIONAL
DEVELOPMENT**

**USE OF
DATA &
INFORMATION**

**COMMUNITY
CHALLENGES**

**COMMUNITY &
GRANTEE
INPUT**

Roles we play, using the informative influences to drive positive change...

**CONVENER &
LEADER**

FUNDER

**CAPACITY
BUILDER**

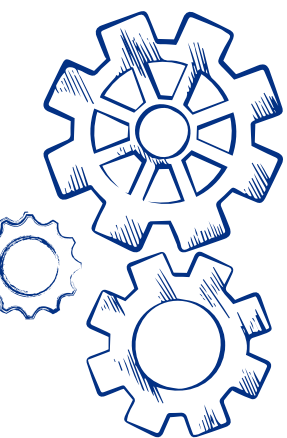
ADVOCATE

**RESOURCE
SHARER**

Positive, mission-focused change that results from informed work...

**LEGACY OF GFBF:
ENHANCED
QUALITY OF LIFE**

**CRADLE TO CAREER:
ECONOMIC PROSPERITY
FOR INDIVIDUALS,
FAMILIES & THE
COMMUNITY**



OUR ROLE AS A

CONVENER &



SERVING AS THE BACKBONE ORGANIZATION FOR THE CRADLE TO CAREER MUNCIE INITIATIVE

To implement the Foundation's proactive grantmaking strategy, GFBF has adopted the concept of and serves as the backbone convener for Cradle to Career Muncie, supporting its associated strategies necessary for success in this multi-generational approach. Cradle to Career Muncie utilizes both collective impact and results-based accountability frameworks to ensure effective, targeted, and collaborative efforts.

By strengthening and expanding opportunities that ensure that all children and families have equitable access to a pipeline of solutions from cradle to career, the Foundation believes that this initiative has the potential, in partnership with others, to provide a brighter future for all of Muncie.

The primary responsibilities of the Foundation as the Cradle to Career backbone include:

SHARED
MESSAGING

MEETING
SUPPORT

PROMISING
PRACTICE
RESEARCH

CAN
LEADER
LINKS

DATA
COLLECTION

LOGISTICS

ADVOCACY

LEADER

A key driving force of Cradle to Career Muncie is the notion that no single organization can improve the educational attainment of Muncie's citizens on its own. This collective impact effort requires systems change, barrier busting, policy improvements, programmatic enhancements, and, above all else, collaborations, relationships, and trust.

Leaders from across 10+ organizations serve as Collaborative Action Network (CAN) Leaders in the initiative, convening and facilitating collective work with many other stakeholders focused on their topic area. These stakeholders are representative of business and industry, local government, early childhood education, K-12 education, higher education, nonprofit organizations, families and students, neighborhood associations, faith communities, and more. Each CAN is responsible for understanding baseline data, setting short- and long-term goals for improvement, and identifying and pursuing promising approaches or evidence-based solutions in an effort to accomplish the decided upon goals. This approach helps to break down unnecessary silos between various stakeholders' work and bridge necessary silos so that strategies are more effective and lasting change is accomplished.

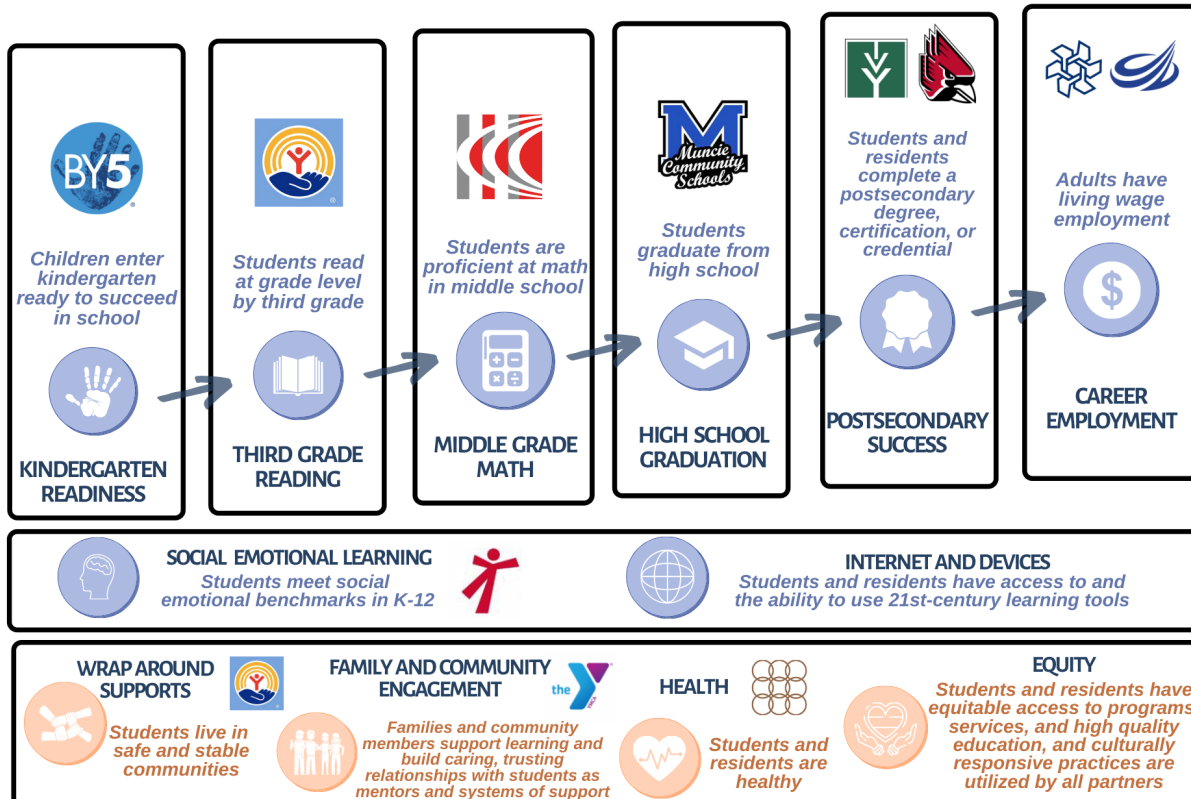
CRADLE TO CAREER MUNCIE



MCS INNOVATION AND STRATEGIC PLANS - CORE GUIDING DOCUMENTS



GEORGE AND FRANCES BALL FOUNDATION - BACKBONE ORGANIZATION



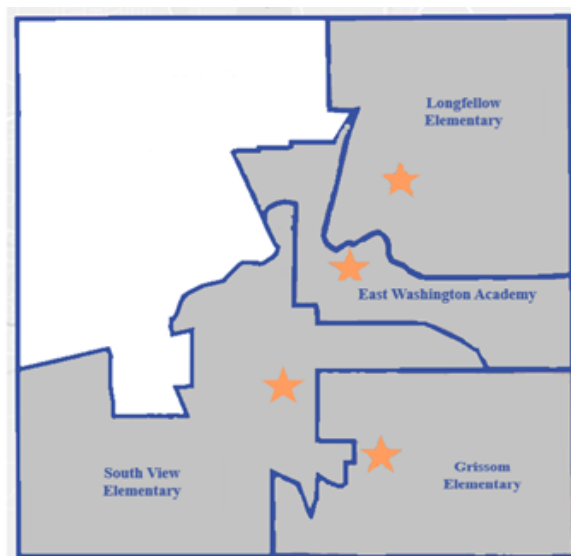


SHARING THE HURDLES AND HOPES OF THE MUNCIE PROMISE NEIGHBORHOOD

As of 2020, more than 60% of the current jobs in the United States require a postsecondary certificate, credential, or degree. Therefore, the concept and benefits of a Cradle to Career approach can positively impact practically any community across the nation. However, some of the communities that have the greatest need for this highly collaborative, deeply systems-based, long-term solution to eliminating generational poverty are the communities that have the most significant challenges.

In early 2021, the George and Frances Ball Foundation, Muncie Community Schools, and Ball State University teamed up to serve as the grantwriting team for the submission of a Promise Neighborhood program grant application to the U.S. Department of Education (USDOE). According to the USDOE, the purpose of the Promise Neighborhoods program is to significantly improve the educational and developmental outcomes of children and youth in the country's most distressed communities, and to transform those communities.

To demonstrate that your community had geographies that could be considered 'promise neighborhoods,' applicants were tasked with using disaggregated data to show that the need was great, along with information to prove that the same communities also had strong, local resources that, if better aligned and leveraged, could help to elevate children and families out of



current circumstances. The data revealed that three quarters of Muncie fit the criteria for Promise Neighborhoods. Further, the community met the rest of the criteria through demonstrated in-kind match from 25+ organizations and a \$3 million cash match commitment from GBBF.

While Muncie's application was strongly scored, it was unfortunately not awarded one of the seven awards granted nationally. However, in December, the Foundation's staff and the Cradle to Career Muncie leadership team held an informative presentation and luncheon focused on sharing the community and academic data that highlights the local need for an equity-based approach to educational attainment and economic prosperity. This event was hosted by Ivy Tech Muncie Henry County and welcomed more than 50 community leaders.

OUR ROLE AS A CONVENER & LEADER



IN ORDER TO MAKE THE GREATEST, MOST EQUITABLE LEVEL OF POSITIVE IMPACT IN THE COMMUNITY

WE MUST HAVE THE **COURAGE TO USE**
DISAGGREGATED DATA.

The process of applying for a Promise Neighborhood grant offered the community the opportunity to come together to find and understand the data representing the local challenges. It also kickstarted the coming together of partners to map out the immense number of stakeholders and organizations who are at-the-ready to help pave a path to a brighter future. In exploring these hurdles and hopes, the community co-developed plan remains valuable and relevant to the positive change needed in Muncie. The Promise Neighborhood concept is rooted in a Cradle to Career collective impact approach, which shares many similarities with the Cradle to Career Muncie Initiative. Partners, spearheaded by Cradle to Career Muncie's CAN Leaders, began mobilizing this year. As they understand baseline data, set aggressive goals, and identify and act on collective strategies to turn the curve, additional partners are being invited to join in on this all-important work.

Having the courage to use disaggregated data can be difficult to muster and is certainly an art form for communities. However, without this laser focus, attempting to change or reverse daunting challenges such as low life expectancy, high poverty rates, and poor health outcomes can be nearly impossible. Using the much-needed disaggregated data, the goals that the USDOE Promise Neighborhood program has set forth can begin to be accomplished. These goals are outlined below.

- Identifying and increasing the capacity of partners that are focused on achieving results for children and youth throughout an entire neighborhood
- Building a complete continuum of cradle-to-career solutions of both educational programs and family and community supports, with great schools at the center
- Integrating programs and breaking down organizational "silos" so that solutions are implemented effectively and efficiently across organizations
- Developing the local infrastructure of systems and resources needed to sustain and scale up proven, effective solutions across the broader region beyond the initial neighborhood
- Learning about the overall impact of this approach and the relationship between particular strategies and student outcomes, accomplished through a rigorous evaluation of the program.





OUR ROLE AS A

FUNDER

The George and Frances Ball Foundation has five primary grantmaking focus areas. Each of the five help the Foundation carry out the ultimate mission of enhancing the quality of place and increasing educational attainment in Muncie and Delaware County. In 2021, GFBF allocated approximately \$5.4 million to area nonprofits. A breakdown of these grants is included here.

EDUCATION & YOUTH

ORGANIZATION	AMOUNT	GRANT TYPE	PURPOSE
Ball State University	\$321,644 \$800,000	O E	BSU-MCS Partnership George & Frances Ball Scholars
Boy Scouts of America	\$100,000	C	Crossroads Council Capital Project for Flagship Camps
Boys & Girls Clubs of Muncie	\$25,000 \$4,000 \$100,000	P P O	Facility Study RBA Certification Afterschool Operations
College Mentors for Kids	\$10,000	O	BSU Chapter
Delaware County BY5	\$100,000 \$2,000	O P	General Operating RBA Certification
Fellowship of Christian Athletes	\$10,000	O	ECI Staff
Heart of Indiana United Way	\$92,500 \$2,500 \$1,000 \$2,000	O M P P	Delaware County Operating Indiana United Ways Match MCS Good Attendance RBA Certification

TYPES OF GRANTS

O = Operating Grant
P = Program Specific Grant
M = Matching Opportunity Grant
C = Capital Project Grant
E = Endowed Funds Grant

ORGANIZATION	AMOUNT	GRANT TYPE	PURPOSE
Ivy Tech Foundation	\$400,000 \$5,000	C P	George and Frances Ball Bldg RBA Certification
Motivate Our Minds	\$35,000	P	After-School Enrichment
Muncie Community Schools	\$10,000 \$2,500 \$5,000	P P P	PN Grant Writer Summer School Incentives RBA Certification
Muncie Innovation Connector	\$111,177 \$2,000	O P	SparkIT Muncie RBA Certification
Project Leadership	\$5,000 \$3,000	P P	<i>Moments</i> Publication RBA Certification
TeenWorks	\$50,000	O	Muncie Operations
United Day Care Center	\$52,942	C	Building Improvements
YMCA of Muncie	\$925,000 \$50,000 \$5,000	C P P	New Campus Summer Day Camp RBA Certification
Youth for Christ, Muncie Area	\$5,000 \$16,250	P P, M	Virtual Tutoring City Life at MCS

CIVIC ENHANCEMENT

ORGANIZATION	AMOUNT	GRANT TYPE	PURPOSE
Cardinal Greenways	\$15,000 \$50,000	C M	Kitselman Trailhead Phase 3 Regional Giving Challenge
Community Enhancement Projects	\$45,000	C	Muncie Memory Spiral
The Community Foundation	\$5,000 \$2,500	P P	Funders Forum Legal Info for Non-Profits
Delaware Advancement Corporation	\$60,000 \$5,000	O O	Vision 2021 COVID-19 Support
Delaware Co. Office of Information	\$5,000	O	COVID-19 Communications
ECI Regional Partnership	\$60,000	O	General Operating
Greater Muncie Habitat for Humanity	\$30,000	O	8twelve Coalition Neighborhood Revitalization
Halteman Village Neighborhood Association	\$5,000	C	Halteman Park
Ross Community Center	\$4,000	P	RBA Certification
Sustainable Muncie	\$3,000	P	RBA Certification
Whitely Community Council	\$35,000 \$4,000	O P	General Operating RBA Certification

OUR ROLE AS A FUNDER

WRAP AROUND SERVICES

ORGANIZATION	AMOUNT	GRANT TYPE	PURPOSE
Ball State University	\$4,000	P	Muncie Food Hub Partnership
Christian Ministries	\$25,000	P	Men's Sleeping Room
Greater Muncie Habitat for Humanity	\$75,000 \$25,000	P C	Homeownership & Repair Program Capital Campaign
Heart of Indiana United Way	\$92,500 \$2,500 \$1,200 \$2,000	O M P P	Delaware County Operating Indiana United Ways Match Mask Up Muncie RBA Certification
Inside Out	\$38,000	P	Fresh Directions
Open Door Health Services	\$4,000 \$13,000	P P	RBA Certification Covering Kids & Families
Second Harvest Food Bank	\$35,000	P	Big Idea Initiative
Youth Opportunity Center	\$43,000	P	Family Preservation Services
YWCA of Central Indiana	\$40,000	O	General Shelter Operations

NATURE & HISTORIC PRESERVATION

ORGANIZATION	AMOUNT	GRANT TYPE	PURPOSE
Red-tail Land Conservancy	\$60,000	O, M	General Operations and New and Sustained Donor Match Challenge

ARTS & CULTURE

ORGANIZATION	AMOUNT	GRANT TYPE	PURPOSE
Cornerstone Center for the Arts	\$100,000	P, C	Arts Education and Internet Rewiring
Muncie Civic Theatre	\$71,552	O	2021 Season Production Costs
Music for All	\$5,000	P	Virtual Education Program

SPECIAL GRANTS

ORGANIZATION	AMOUNT	GRANT TYPE	PURPOSE
Indiana Philanthropy Alliance	\$7,920	O	Statewide Association
Minnetrista Cultural Foundation	\$1,110,000	O, C E	Operations & Improvements Karen Vincent Fund
Riley Children's Foundation	\$50,000	P	Luke Bracken Wiese Fund for Juvenile Diabetes Research



OUR ROLE AS A FUNDER



Innovation Connector



Muncie Civic Theatre

THE TRANSFORMATIVE JOURNEY TOWARDS CATALYTIC AND PROACTIVE GRANTMAKING

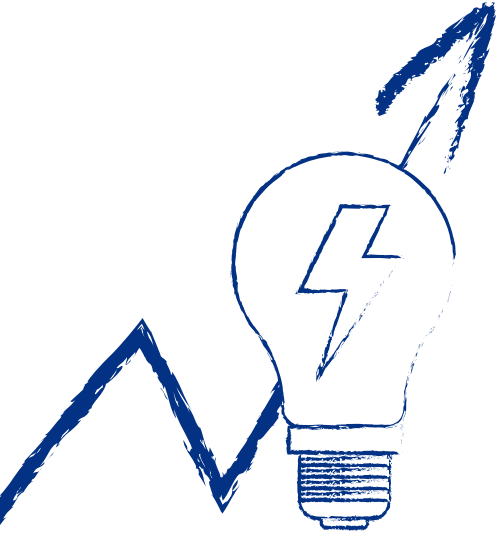
LAYS THE FOUNDATION FOR AND MAKES POSSIBLE THE

**STRENGTHENING OF ORGANIZATIONS AND COMMUNITIES,
ADVANCEMENT OF EQUITY AND INCLUSION,
CONNECTED RELATIONSHIPS THROUGH CONVENING,
NURTURING OF CREATIVITY AND INNOVATION,
INFLUENCE ON POLICY, AND BUILDING OF
CIVIC PARTICIPATION.**

-EXPONENT PHILANTHROPY



Teen Works



OUR ROLE AS A

CAPACITY



50+ NONPROFIT PROFESSIONALS RECEIVED CERTIFICATION IN RESULTS-BASED ACCOUNTABILITY

In 2021, the Foundation invited 50+ nonprofit professionals from across 13 different community organizations to participate in the Results-Based Accountability Professional Certification Program through Clear Impact. Throughout this self-paced, online, 90-day program, participants learned the principals of RBA and were given opportunities to practice them independently and alongside their colleagues. Foundation program staff also hosted three Collaborative Learning Sessions where members of each participating organization could gather together to practice the concepts, ask questions, and learn from their peers.

Utilizing a results-based accountability framework allows community partners to go beyond simply understanding baseline data and then identifying strategies. Instead, it ensures that the story behind the data is being explored, the right partners are actively involved, and evidence-based or promising practices are being pursued. Combining RBA with continuous improvement principles, the Foundation believes that Cradle to Career Muncie and all other community initiatives will be stronger in driving longer lasting change in the lives of children, families, and the community.

PARTICIPATING ORGANIZATIONS:



BUILDER

STRENGTHENING THE DATA CAPACITY OF NONPROFIT PARTNERS IN MUNCIE

Each quarter, the Foundation's program staff, Kelsey and Kortney, host Coffee and Conversation events open to the nonprofit community in Muncie and Delaware County. During these sessions, the staff discuss upcoming grant deadlines and information, introduce different sources of data that grantees can easily access on their own, and illustrate ways in which organizations could use this data to share and communicate their organization's progress and impact.

The Foundation's staff developed a printed guide that outlines various data sources often shared in Coffee and Conversation sessions. This tool offers organizations a quick reference resource that enhances their ability to:

- Write strong grant applications for GFBF and others
- Create marketing materials that articulate the identified community needs that the organization exists to meet
- Solicit individual or corporate support
- Communicate their success stories, as well as share their progress and impact

Working in tandem with the printed data guide, community partners have access to a data resource center on the GFBF website that goes one step further in helping nonprofit professionals learn about and navigate numerous data sources. The GFBF staff are passionate about building the capacity of our partners through the strengthening of their ability to find and use data. There is an overarching trend across many different sectors of an emphasis on the importance of using data to drive and inform the work and strategies of organizations. The Foundation believes that increasing partners' ability to use data will make their organizations stronger.

In addition to concentrated efforts to increase partners' capacity to find, understand, visualize, and use data on their own, the Foundation recognizes that a one-stop-shop for already analyzed data can play an important role. There is a significant amount of existing data spread out across a number of reports and websites. The quicker the Foundation can equip organizations with the numbers needed to understand underlying community circumstances, the less capacity nonprofits must expend to do so.





OUR ROLE AS AN **ADVOCATE**

In 2021, in collaboration with Muncie Community Schools and Ball State University, the George and Frances Ball Foundation participated in the preparation of a \$30 million grant request to the U.S. Department of Education's Promise Neighborhood program with a focus on specific neighborhoods in Muncie. As part of the grant preparation process, the data revealed an urgency to address the inequities faced by families and their children living in the Promise Neighborhood. The George and Frances Ball Foundation believes that the special attention that must be paid to the Promise Neighborhood is a response to the historic consequence of the loss of a significant number of industrial and related jobs, not unlike other rustbelt communities. This disruptive community force that has spanned approximately the past 50 years, has impacted thousands of youth and their families. Based on the research, educational attainment and family support and involvement play a major role in unlocking economic prosperity.

It is estimated that youth today have 6,000 waking hours each year with only 1,000 hours involved in time at school. Therefore, it becomes obvious that to improve educational outcomes for students requires support not only from schools but from a wide range of other community organizations including non-profits, philanthropy, faith communities, businesses and industry, and families. Alignment and collective efforts across these groups provide the opportunity for each child to reach their full potential in life – we believe this coordination is the obligation of our community.

The Foundation advocates for:

EQUITABLE APPROACHES

USE OF DATA

RESULTS-BASED ACCOUNTABILITY

CRADLE TO CAREER

COLLECTIVE IMPACT

FAMILY ENGAGEMENT

**BASED ON THE RESEARCH,
EDUCATIONAL
ATTAINMENT AND
FAMILY SUPPORT AND
INVOLVEMENT
PLAY A MAJOR ROLE IN UNLOCKING
ECONOMIC PROSPERITY.**



Muncie Community Schools



AN EDUCATIONAL ATTAINMENT INITIATIVE

Collaboration, meaning community organizations working together, is the key to the success that can be achieved. Not only does the George and Frances Ball Foundation collaborate with and among CAN Leaders and members as it pertains to strategies, but also as it pertains to advocacy efforts and shared messaging to draw attention to what is most important.

The community is incredibly fortunate to have many organizations who have stepped forward to provide leadership for this effort, and for the many more partners who will be involved in realizing commonly developed goals and objectives moving forward. The purpose of Collaborative Action Networks (CANs) is to align existing community resources, including communications, toward common goals. The Foundation facilitates the overarching Cradle to Career Muncie Initiative, providing backbone support to each of the ten CANs, which are similar to coalitions or taskforces. The leadership of each of the CANs is as follows:



KINDERGARTEN READINESS - BY5



THIRD GRADE READING - HEART OF INDIANA UNITED WAY



MIDDLE SCHOOL MATHEMATICS - INNOVATION CONNECTOR



HIGH SCHOOL GRADUATION - MUNCIE COMMUNITY SCHOOLS



POST-SECONDARY SUCCESS - IVY TECH



CAREER EMPLOYMENT - CHAMBER OF COMMERCE/DELAWARE ADVANCEMENT CORPORATION



WRAP AROUND SUPPORTS - HEART OF INDIANA UNITED WAY



FAMILY AND COMMUNITY ENGAGEMENT - YMCA OF MUNCIE



HEALTH - OPEN DOOR HEALTH SERVICES



SOCIAL AND EMOTIONAL LEARNING - PROJECT LEADERSHIP



OUR ROLE AS A

RESOURCE

At the Foundation, we know that it is critical to walk alongside our funded partners as they pursue a variety of different resources, not just grant support from GFBF. The year 2021 brought with it many opportunities to play a resource sharing role with partners, particularly as leaders at the state and federal levels identified the need for and subsequently made available significant COVID-19 response and recovery resources. Beyond these very helpful, yet situationally warranted opportunities, the Foundation also supports organizations with data resources, professional development grants, and connection-making to aid in their success with local grantseeking and individual donor cultivation and solicitation.

ASSISTING COMMUNITY PARTNERS AS THEY LEVERAGE OUTSIDE FUNDING OPPORTUNITIES

In 2021, more than \$3 million in outside-of-the-community funding was leveraged and brought to Muncie and Delaware County from Indiana House Bill 1008 alone. HB1008 was administered by the Indiana Department of Education as a 2-year grant program focused on accelerating learning through a systematic plan to remediate and support students in an exclusively in-person learning environment post-pandemic. In Muncie, funding was dispersed across numerous organizations including Ross Community Center, Boys & Girls Clubs of Muncie, Motivate Our Minds, Muncie Community Schools, YMCA of Muncie, Ball State University, and others.

To help Muncie pursue some of the state's \$150 million total budget for this program, GFBF staff offered nonprofit partners the Muncie Promise Neighborhood plans, previously collected, and often times already visualized data, as well as access to a professional grant writer when needed. By sharing these resources, organizations could more quickly and nimbly respond to this funding opportunity, ultimately resulting in greater results for the community at-large.



The programs that were supported at the various aforementioned nonprofits were focused explicitly on supporting Muncie Community Schools teachers and students. The role the Foundation plays as a resource sharer has the ability to positively impact partners across each of the Foundation's focus areas and plays a critical role in advancing the efforts of Cradle to Career. The more that outside ideas, resources, and opportunities can be tapped, the stronger our community can be.

SHARER





GEORGE AND FRANCES BALL FOUNDATION

BOARD &



DIRECTORS

Jon H. Moll
Chairman

Stefan S. Anderson
Chairman Emeritus

Ronald K. Fauquher
Vice Chairman

Ted Wiese
Secretary

Will Bracken

Ermalene M. Faulkner

Michael B. Galliher

Steven M. Smith

Marianne Vorhees

Directors Emeritus:

Norman E. Beck

Joan H. McKee

Robert M. Smitson

STAFF

Thomas Kinghorn
President and CEO

Kortney Zimmerman
Program Officer

Kelsey Harrington
Program Associate

Shannon Cline
Executive Assistant

Tamara S. Phillips
Treasurer and Manager

Carol E. Seals
Assistant Treasurer

STAFF

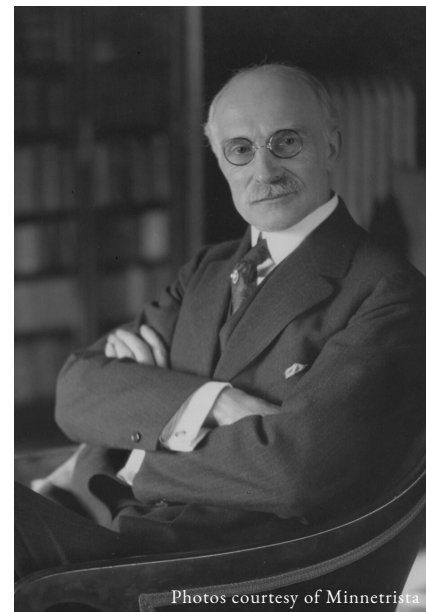
84 YEARS OF CONTINUED LEGACY

The Foundation, founded in 1937 by George and Frances Ball, was organized exclusively to promote charitable, scientific and educational purposes, with a strong commitment to the needs of East Central Indiana. The family was well known for their philanthropy and for numerous other accomplishments including championing education, collecting items such as rare children's literature, and creating the Ball Jar Blue Book. Honoring the family's interests and legacy past, present, and the future, the Foundation reviews and funds grants across 5 different focus areas including education and youth, civic enhancement, arts and culture, wrap-around services, and nature and historic preservation. The Foundation adopted a new proactive grantmaking strategy in 2018, which carries forward the education-focused legacy of George and Frances Ball with efforts to increase educational attainment through a community Cradle to Career Initiative.

"The Foundation and its donors have had an extensive history supporting education and youth organizations in this community for over 100 years. We believe that not only does Cradle to Career reflect the values and legacy of George and Frances, it is also a proactive approach to addressing the community's present challenges. One of the strongest ways to increase economic prosperity is through educational attainment."

-Tom Kinghorn, President & CEO

THE G.A. BALL FAMILY



Photos courtesy of Minnetrista



Est. 1937

GEORGE AND FRANCES BALL FOUNDATION

222 South Mulberry Street
Muncie, Indiana 47305
(765) 744-5500